

09—400 Removal and installation of air cleaner

Job No. of flat rates or standard texts and flat rates data 09—015.

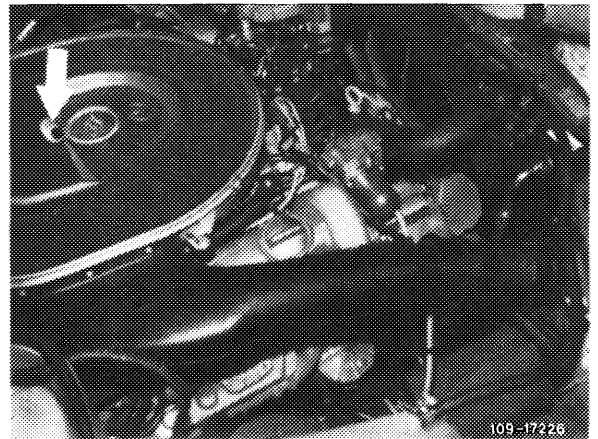
Note

The air cleaner is made of light alloy. On model 126, intake is via a fresh air scoop and a plastic snorkel. The fresh air scoop is mounted at the right on radiator.

A cutout (arrow) is located in air cleaner top for adjusting idle speed mixture.

On model 107 the air intake is at the left.

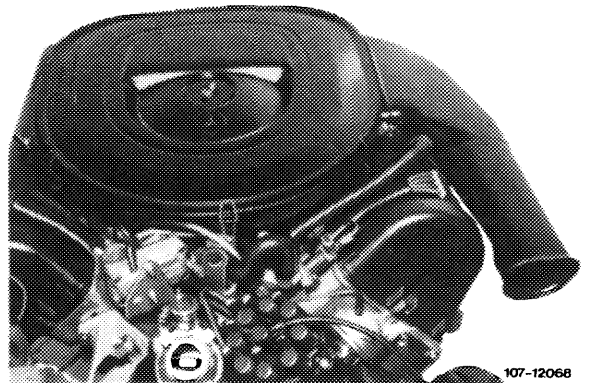
Model 126



Removal

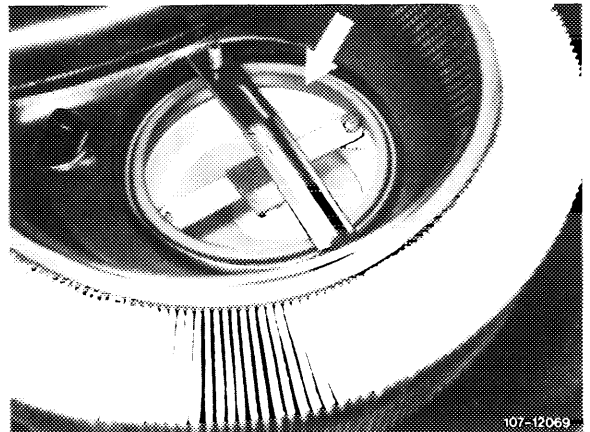
- 1 Unscrew both fastening nuts on vibration mounts.
- 2 Remove air cleaner, while pulling off contour hose for crankcase breather.

Model 107



Installation

- 3 Remove air cleaner cover.
- 4 Mount air cleaner. Pay attention to correct seat of sealing ring (arrow) between air flow meter and air cleaner.
- 5 Mount air cleaner cover.

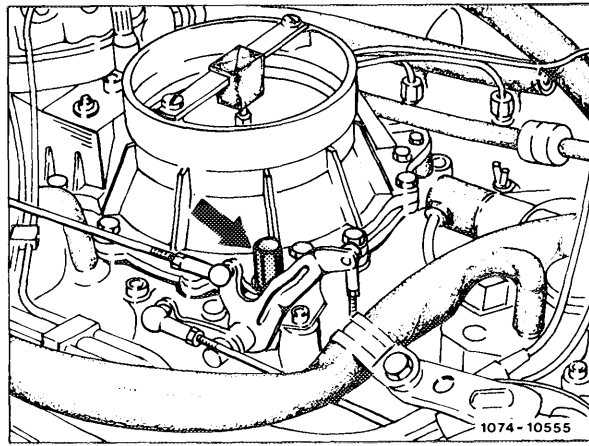


For better location of air cleaner install a stop nut (arrow), part No. 117 070 00 41, at the front right instead of hex. nut.

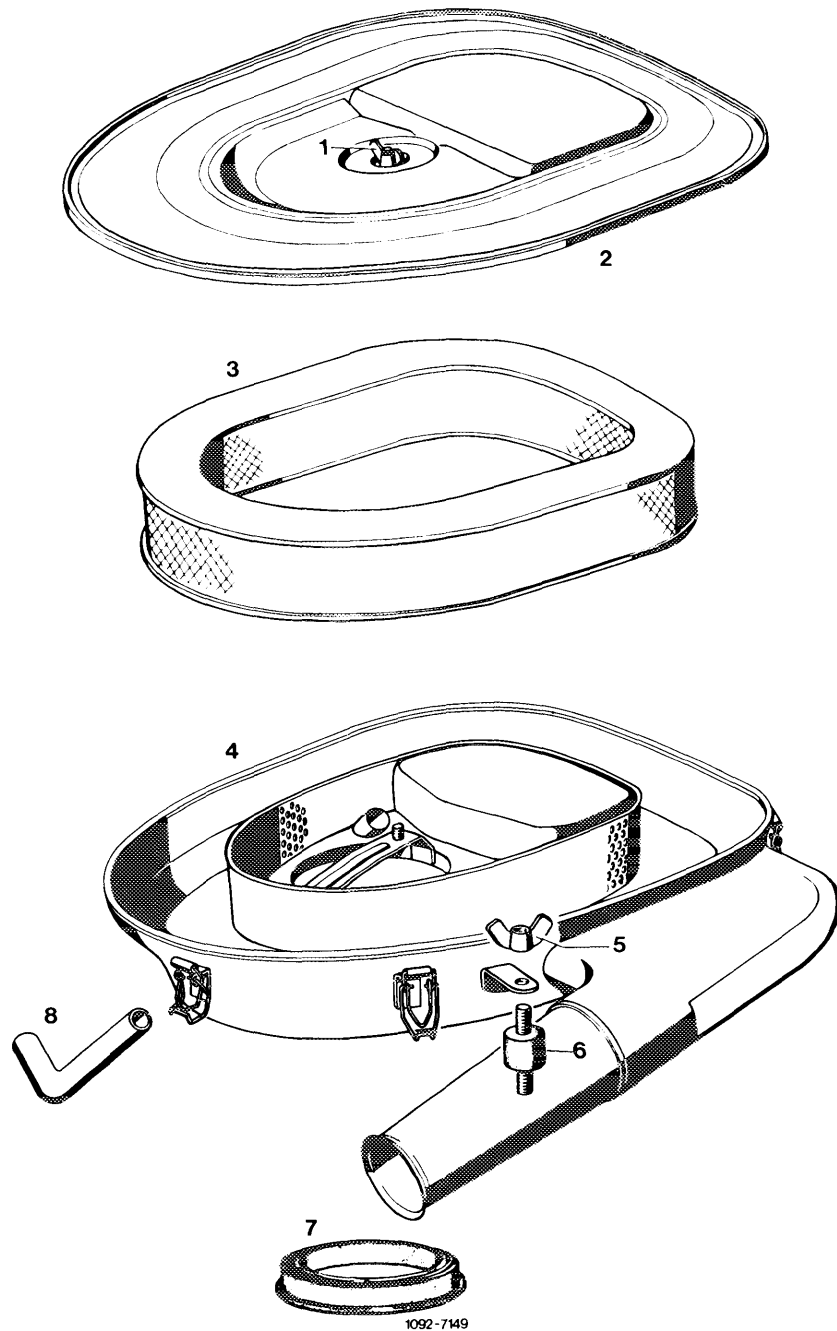
Installation: September 1981

Air cleaner element

A perforated air cleaner element, Part No. 002 094 69 04, can be retrofitted for extremely dusty conditions.

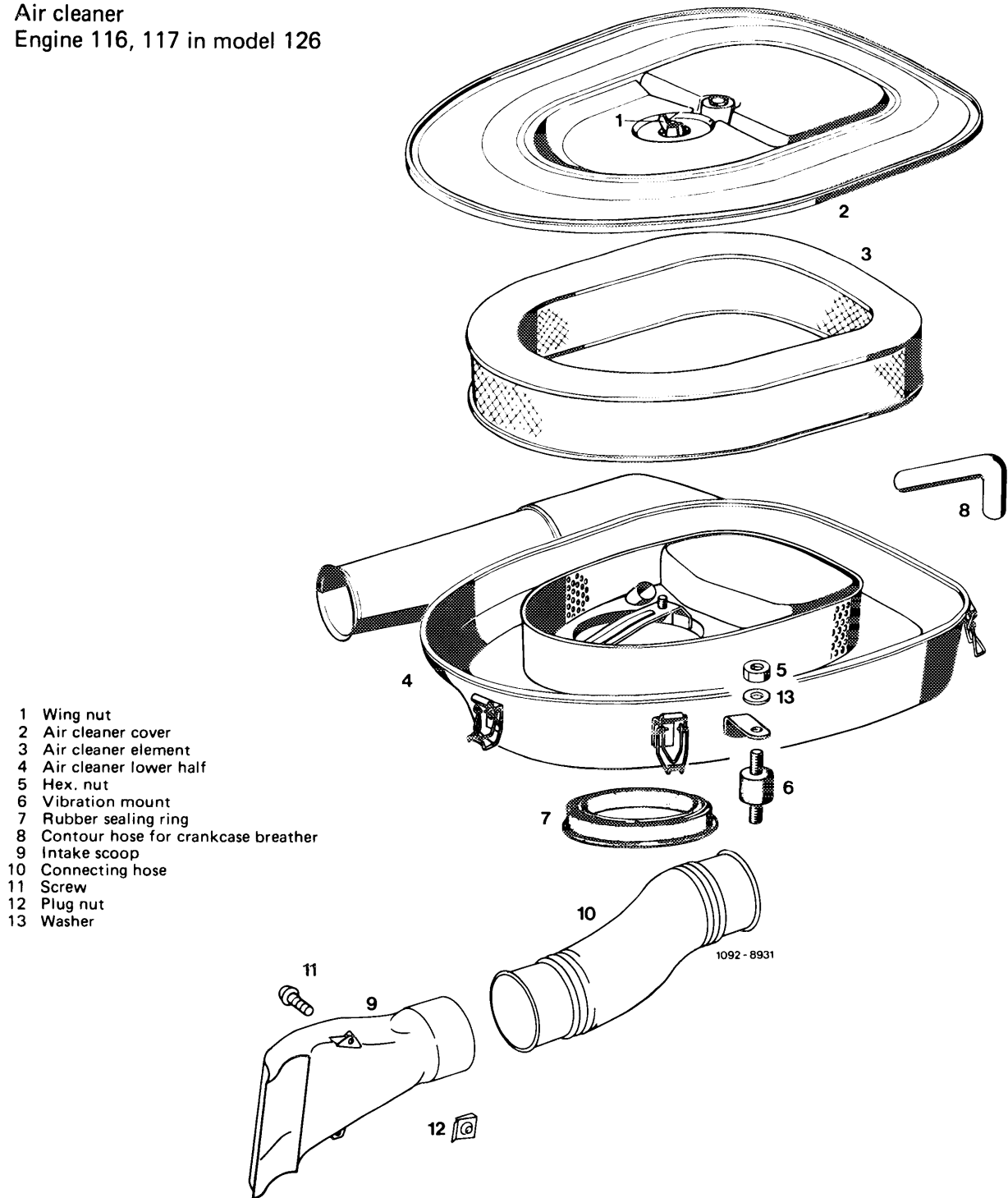


**Air cleaner
Engine 117 in model 107**



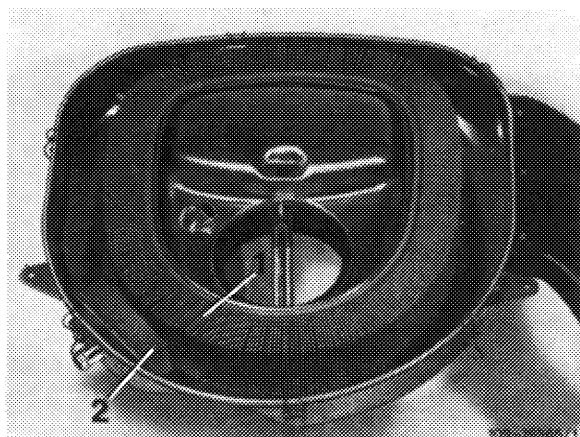
- 1 Wing nut
- 2 Air cleaner cover
- 3 Air cleaner element
- 4 Air cleaner lower half
- 5 Wing nut
- 6 Vibration mount
- 7 Rubber sealing ring
- 8 Contour hose for crankcase breather

Air cleaner
Engine 116, 117 in model 126



- 1 Wing nut
- 2 Air cleaner cover
- 3 Air cleaner element
- 4 Air cleaner lower half
- 5 Hex. nut
- 6 Vibration mount
- 7 Rubber sealing ring
- 8 Contour hose for crankcase breather
- 9 Intake scoop
- 10 Connecting hose
- 11 Screw
- 12 Plug nut
- 13 Washer

Note: National versions **(AUS)** **(CH)** **(J)** **(S)** **(USA)** are provided with 2 air cleaner elements.



- 1 Air cleaner element engine
- 2 Air cleaner element air pump