

### Headlamp Adjustment

Correct headlamp adjustment is extremely important. Check and readjust headlamps at regular intervals and when a bulb has been replaced.

### Replacing Bulbs

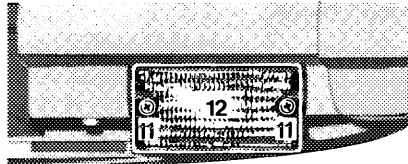
Install only 12 volt bulbs with the specified watt rating.

### Front Lamps

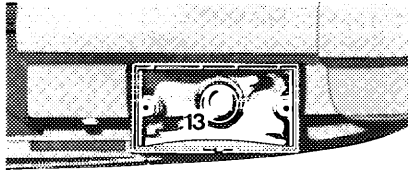
- 1 Cover
- 2 Securing screws for cover
- 3 Horizontal adjusting screws
- 4 Vertical adjusting screws
- 5 High/low beam sealed-beam unit (Halogen) No. 2:

Remove cover (1).  
Loosen clamping screws (8), remove retaining ring and lamp, disconnect plug from socket on lamp.

- 6 High beam sealed-beam unit (Halogen) No. 1:  
Loosen clamping screws (9), remove retaining ring and lamp, disconnect plug from socket on lamp.
- 7 Side marker lamp (4 W/2 cp bulb):  
Remove headlamp (5), loosen clamping screw (10) and detach lamp holder. Depress bulb, turn left and pull out.



8458



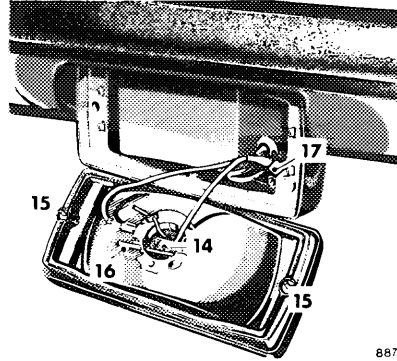
8459

- 13 Bulb for turn signal, parking and standing lamps (21/5 W/32/3 cp):

The lamps are located below the bumper.

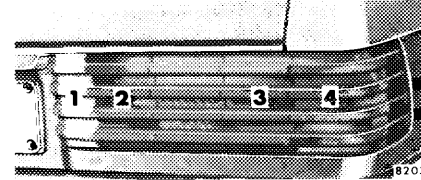
Loosen securing screws (11) and remove lens (12).

Depress bulb (13), turn left and pull out. When replacing the lens, it must be ensured that the protrusion on the lens is at the bottom.

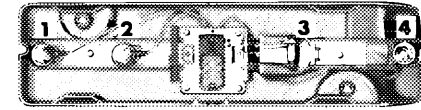


8675

- 14 Bulb for fog lamp (H3):  
Loosen securing screws (15) and remove housing. Detach holding spring (16), remove bulb (14) and disconnect plug (17).



8204



8204

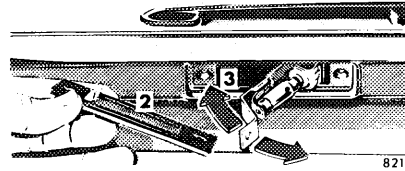
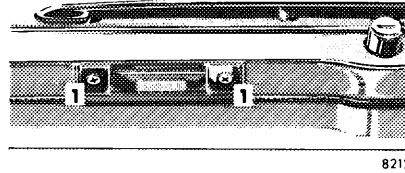
### Taillamp Assembly

Remove both knurled nuts in the trunk and pull off bulb carrier. To replace the bulbs, depress, turn left and pull out.

- 1 Backup lamp (21 W/32 cp bulb)
- 2 Stop lamp (21 W/32 cp bulb)
- 3 Tail, parking and standing lamp (10 W bulb)
- 4 Turn signal lamp (21 W/32 cp bulb) side marker lamp (5 W bulb)

### High Mounted Stop Lamp (H2/22.5 W bulb)

To replace the bulb, open trunk lid. Unscrew four nuts, remove lamp housing and gasket, remove bulb.



### License Plate Lamps (5 W bulb)

Loosen both securing screws (1), detach lens with gasket (2) and pull down lamp holder (3) on the LH side. Replace the bulb. When reinstalling the lens, it must be assured that the protrusion on the lens is on the LH side.

### Spark Plugs

This vehicle is equipped with spark plugs as required for driving in the USA. If additional information is desired, your authorized MERCEDES-BENZ dealer will be happy to offer advice (see also rear inside cover of Owner's Manual).