



Mercedes-Benz

Work instructions

Van

Group 91

CODE: NC3DABTKW2

SM91.60-D-0077SG

24.02.2022

Replace driver's airbag (code: NC3DABTKW2, acc. no.: 91 921 53)



Model 906



SM91.60-D-0077SG	Replace driver's airbag (code: NC3DABTKW2, acc. no.: 91 921 53)	08.11.2021
-------------------------	--	-------------------

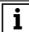
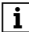




Model 906









Operation no. of the operation texts or standard texts and flat rates

Category	Op. no.	Operation text	Time	Acc. no.	Code
L	02 1429	Operations: Replace driver's airbag	---	91 921 53	NC3DABTKW2

 Warning	Risk of injury caused by performing testing or repair work on airbag or emergency tensioning retractor units.	Store airbag units with deployment side facing up; do not expose to temperatures greater than 100 °C. When working on these units, disconnect the power supply.	AS91.00-Z-0001-01A
 Warning	Risk of injury during testing and repair operations related to pyrotechnical components	Do not expose pyrotechnical component parts to temperatures above 100 °C or 212 °F. Disconnect current supply when working on such component parts.	AS91.00-Z-0008-01A
Notice	Notes on performing repair, body work and welding on vehicles with airbags and RTE units		AH91.00-P-0002-01M
Notice	Information on preventing damage to electronic components due to electrostatic discharge		AH54.00-P-0001-01A
Notice	Notes on carrying out repair work in the vehicle interior		AH68.00-D-0001-01KOS
	Legal requirements on handling and storing airbags and emergency tensioning retractor units		AH91.00-P-0004-01A
	Assessment of airbag and belt tensioner units in accident vehicles		AH91.00-P-0006-01B


	Check		
1	Check whether vehicle is affected by measure.	<p>Affected vehicles: Replace driver's airbag (code: NC3DABTKW2, acc. no.: 91 921 53) Model 906.### ## as of 000060 up to 284321</p> <p>Affected vehicles: Replace driver's airbag (code: NC3DABTKW2, acc. no.: 91 921 53) Model 906.### ## as of 284344 up to 400764</p> <p>Affected vehicles: Replace driver's airbag (code: NC3DABTKW2, acc. no.: 91 921 53) Model 906.### ## as of 400765 up to 516117</p> <p>Affected vehicles: Replace driver's airbag (code: NC3DABTKW2, acc. no.: 91 921 53) Model 906.### ## as of 516118 up to 683889</p> <p>Affected vehicles: Replace driver's airbag (code: NC3DABTKW2, acc. no.: 91 921 53) Model 906.### ## as of 683890 up to 999998</p> <p> For authorized Mercedes-Benz service partners, only the entry in the Extended VEGA Application (EVA) system, in the "Current" tab, is decisive. An additional test of the affected vehicles in the workshop information system (WIS) or vehicle list is thereby not necessary.</p>	<p>SM91.60-D-0077-01AAA</p> <p>SM91.60-D-0077-01AAB</p> <p>SM91.60-D-0077-01AAC</p> <p>SM91.60-D-0077-01AAD</p> <p>SM91.60-D-0077-01AAE</p>

2	Check for error messages and warnings in the instrument cluster.	<p> Turn transmitter key in electronic ignition lock to position 1 and check whether the warning and indicator lamps go out permanently after a few seconds and that no error messages are displayed in the instrument cluster.</p> <p> Make sure that neither fault messages or warnings (in particular for the Supplemental Restraint System (SRS)) are shown in the instrument cluster.</p> <p> Any fault rectification that may be necessary must not be invoiced under this service measure!</p> <p>If fault messages or warnings are issued on the instrument cluster (in particular for the Supplemental Restraint System (SRS)),</p> <p style="text-align: center;">↓</p> <p>determine the cause and perform suitable repair measures.</p>	
	Remove		
3  AR	Remove driver airbag.	<p> The driver airbag is replaced. Dispose of the removed driver airbag properly. To do so, observe the applicable legal requirements and specifications of the relevant country.</p>	AR91.60-D-0660C

	Documentation of work performed		
4  SI	Document serial numbers of removed and new driver airbags. Service Information: Notes on safety-relevant components subject to redocumentation requirements	<p> Document serial numbers of removed and new driver's airbag using "Mercedes-Benz PartScan" mobile app.</p> <p>To do so, follow the instructions in the "Mercedes-Benz PartScan" mobile app.</p> <p> Redocumentation can also be carried out through the familiar method that has been used up to now, via a person in the company with Vehicle Documentation (VeDoc) write permissions, according to the repair performed. However, it is not absolutely essential for the mechanic carrying out the work to do this (for redocumentation requirement, see SI00.10-S-0033A). For redocumentation in VeDoc, an indication must be noted on the workshop order.</p>	<p style="text-align: right;">Page 6</p> <p>SI00.10-S-0033A</p>
	Install		
5  AR	Install new driver airbag.		AR91.60-D-0660C
	Check		
6	Check for error messages and warnings in instrument cluster.	<p> It is not necessary to check the Supplemental Restraint System (SRS) using the diagnostic system after replacing the driver's airbag.</p> <p> Turn transmitter key in electronic ignition lock to position 1 and check whether the warning and indicator lamps go out permanently after a few seconds and that no error messages are displayed in the instrument cluster.</p> <p>This means that the SRS self-test is fully assured after completion of the measure.</p>	

Parts ordering note

Part no.	Designation	Quantity
A 906 860 19 00 26	Driver's airbag (only for Belgium, Bulgaria, Denmark, Germany, Finland, France, Greece, Great Britain, Ireland, Italy, Croatia, Luxembourg, Netherlands, Austria, Portugal, Romania, Russia, Sweden, Switzerland, Slovakia, Slovenia, Spain, Czech Republic, Hungary)	1
A 906 860 19 00	Driver's airbag (worldwide except Belgium, Bulgaria, Denmark, Germany, Finland, France, Greece, Great Britain, Ireland, Italy, Croatia, Luxembourg, Netherlands, Austria, Portugal, Romania, Russia, Sweden, Switzerland, Slovakia, Slovenia, Spain, Czech Republic, Hungary)	1

SM91.60-D-0006-02TS	Documentation of operations conducted		
 SI	Service Information: Notes on safety-relevant components subject to redocumentation requirements		SI00.10-S-0033A

Model **906, 909**

Modification notes

08.11.2021	Operation step 6 added.		
------------	-------------------------	--	--

QR code: login authentication for "Mercedes-Benz PartScan" app



S00.00-4550-06



As an alternative to the familiar and still possible redocumentation procedure in VeDoc, the use of the "Mercedes-Benz PartScan" app is recommended for simplified redocumentation.

The following information must always be observed:

- Before starting any work, make sure that neither fault messages nor warnings (in particular for the Supplemental Restraint System (SRS)) are shown in the instrument cluster.
- A necessary fault rectification may not be invoiced under this service measure!
- To be prepared for the work procedure, the "Mercedes-Benz PartScan" app must be installed on a

terminal running an Apple® iOS operating system or an Android® operating system.

- A mobile Internet connection is required for installation and data transfer!
- Download the app from the "Apple® App Store" for terminals running an Apple® iOS operating system or from the "Google® Play Store" for terminals running an Android® operating system (the download is similar to that for other apps).
- Following the download, a one-time login authentication must be performed using an encrypted QR code (follow the instructions for the "Mercedes-Benz PartScan" app).

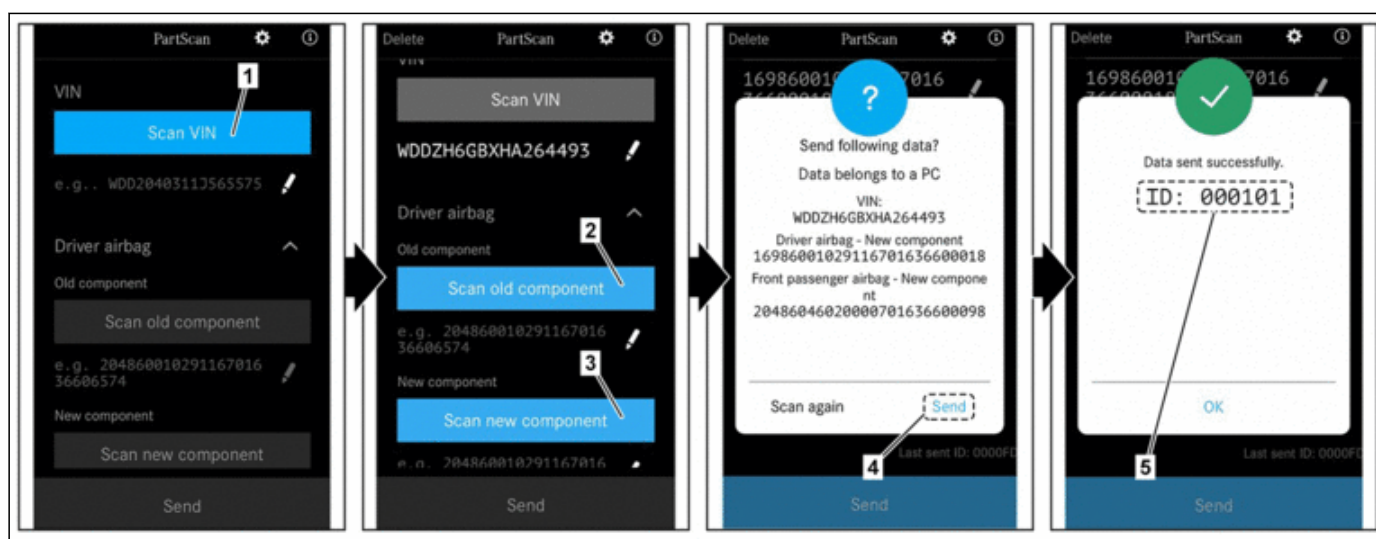
- The required QR code for the one-time login authentication can be scanned from the picture here. Make sure that **only authorized workshop personnel have access to the QR code!**



Redocumentation can be carried out through the familiar method that has been used up to now, via a person in the company with Vehicle Documentation (VeDoc) write permissions, according to the repair performed. However, **it is not absolutely essential for the mechanic carrying out the work to do this** (for redocumentation requirement, see SI00.10-S-0033A). For redocumentation in VeDoc, an indication must be noted on the workshop order.



In order to simplify redocumentation and avoid input errors, the use of the **"Mercedes-Benz PartScan"** app is recommended. In the event of redocumentation with the "Mercedes-Benz PartScan" app, no additional documentation needs to be implemented in VeDoc.



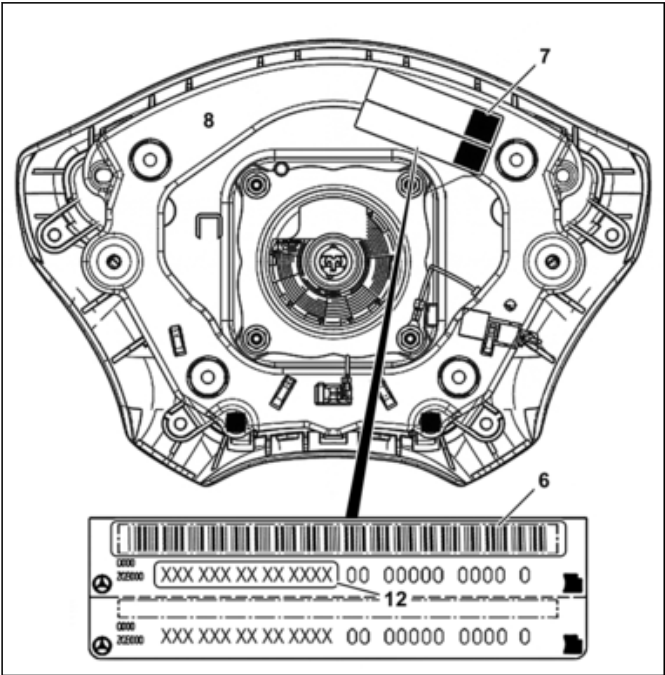
S91.60-A090-78

Picture shown in English

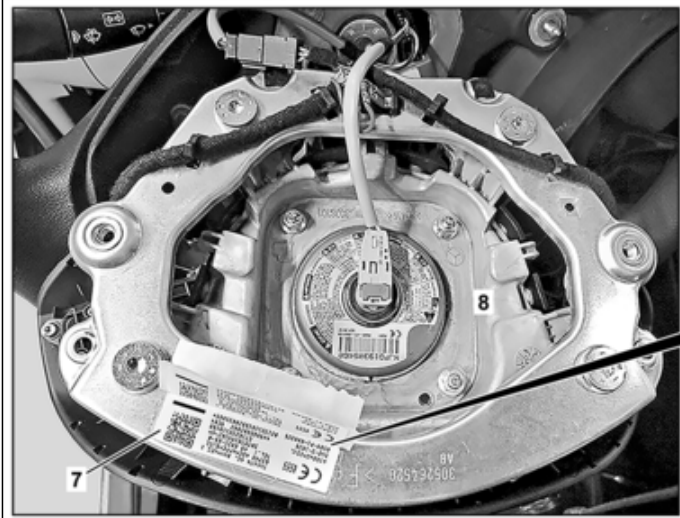
- | | | | | | |
|---|-----------------------------|---|-----------------------------|---|---------|
| 1 | "Scan VIN" button | 3 | "Scan new component" button | 5 | Scan ID |
| 2 | "Scan old component" button | 4 | "Send" button | | |

Shown on driver's airbag

- 6 Bar code
- 7 Adhesive label
- 8 Driver airbag
- 12 Part number



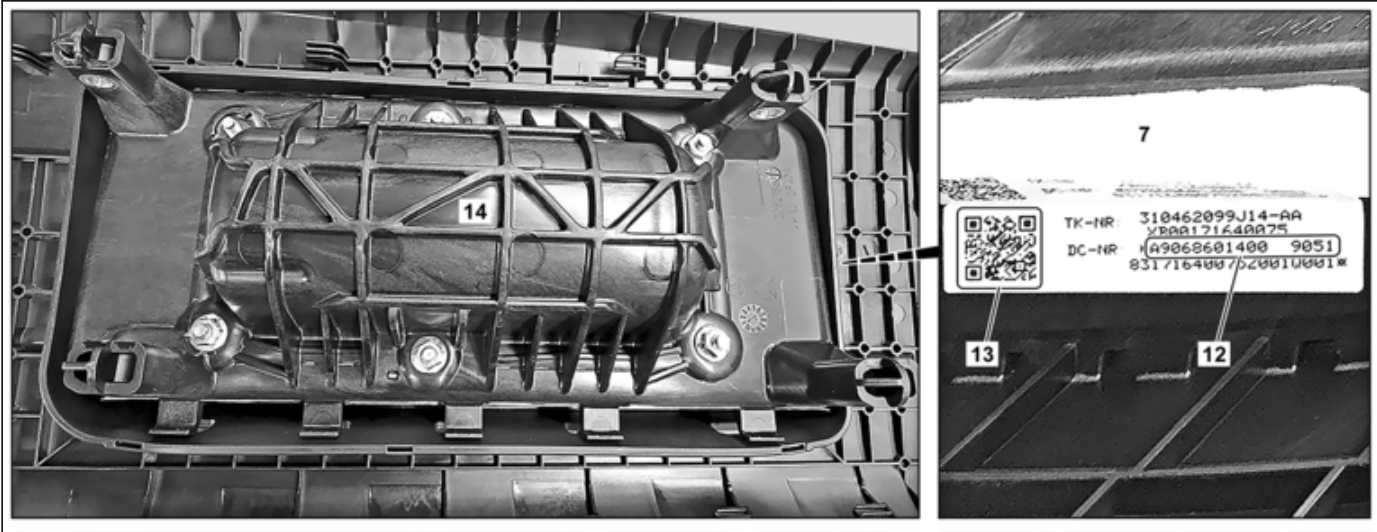
D91.60-A019-12



D91.60-A020-08

Shown on driver's airbag

- | | | | | | |
|---|----------------|----|-------------|----|---------|
| 7 | Adhesive label | 12 | Part number | 13 | QR code |
| 8 | Driver airbag | | | | |



D91.60-A021-08

Shown on front passenger airbag

- | | | | | | |
|----|----------------|----|---------|----|------------------|
| 7 | Adhesive label | 13 | QR code | 14 | Passenger airbag |
| 12 | Part number | | | | |

i
The information required for the documentation is present on the adhesive label (7) of the old as well as the new driver's airbag (8) or front passenger airbag (14).

- 1 Scan vehicle identification number (FIN/ VIN) using "Scan VIN" button (1) either via barcode or text field.

i
The redocumentation must not be performed by the technician carrying out the work.

After the scan procedure, compare the read-off VIN in the "Mercedes-Benz PartScan" app and correct it manually in the event of any scan errors.

All required data can also be read off and entered manually.

- 2 Scan barcode (6) or part number (12) of removed driver's airbag (8) or front passenger airbag (14) using the "Scan old component" button (2).

i
Make sure that barcode (6) or part number (12) of adhesive label (7) is scanned at removed driver's airbag (8) or front passenger airbag (14).

All required data can also be read off and entered manually.

- 3 Scan QR code (13) or part number (12) of adhesive label (7) at new driver's airbag (8) or front passenger airbag (14) using "Scan new component" button (3).

i
Ensure that lower QR code (13) of adhesive label (7) is scanned at new driver's airbag (8) or front passenger airbag (14).

All required data can also be read off and entered manually.

- 4 Use "Send" button (4) to create scan ID (5).

- 5 Document **Scan ID** (5) in written form on workshop order and file in a tamperproof manner.

i
Only when using the "Mercedes-Benz PartScan" app.

i
To invoice the workshop order, it is absolutely essential to enter the Scan ID (5) in the "Extended VEGA Application (EVA)" system in the comment field of the workshop order!

- 6 Cut off lower part of adhesive label (7)
with QR code and attach on workshop
order in a tamperproof manner.