

WORK DESCRIPTION FOR FIELD MEASURE

Code: 23P7493001

Version: 2.0

Rework seam seal in area of hinge on right of rear-end door

Model 297

Work procedure

1. Remove covers (A, Figure 1) on water channel at top and on right side.



Figure 1

2. Clean the area marked with arrows (Figure 2) on the seam seal and rework with transparent seam seal.

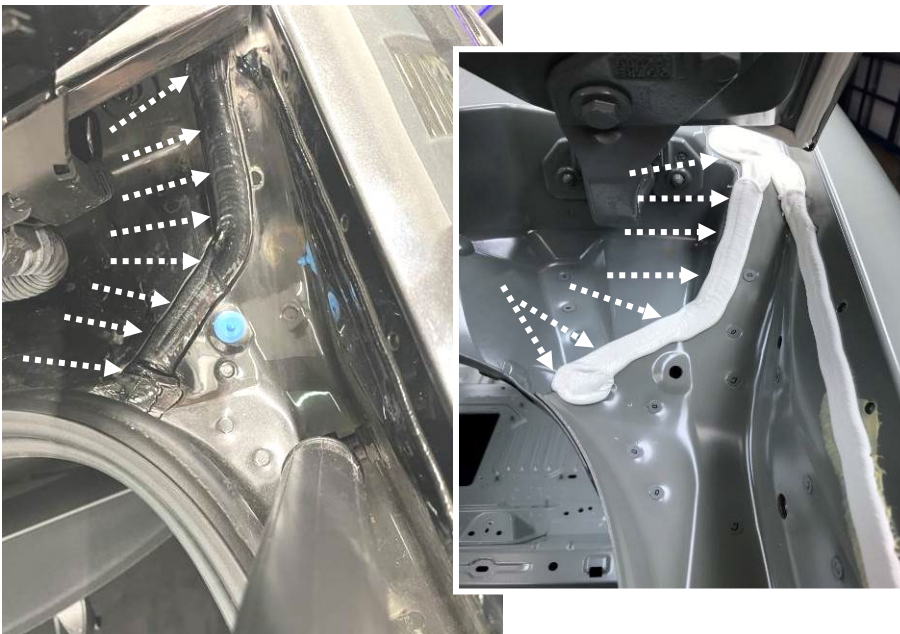


Figure 2

3. Assemble in reverse order.

Parts

Quantity	Designation	Part no.
1*	Activator	A 000 989 31 00
1*	Seam seal	A 000 989 32 00 09

* One packaging unit suffices for at least 10 vehicles.

i Small parts such as screws, lock nuts, sealing rings, cable ties, fluids, sealant, etc. are not listed in the parts list. The required small parts are taken into account in the budgeting.

Operation text and flat rate

Operation no.	Operation text	Flat rate	Accounting no./ damage code
12-1991	Rework seam seal in area of hinge on right of rear-end door Includes: Remove/install trims	0.5 WU	74 930 01

Mercedes-Benz
Global Service & Parts